



Product Information



Overview:

Fusion has been designed after extensive research into markets where enclosures play a vital role in providing long-lasting, cost efficient and well-engineered solutions that protect valuable equipment and cabling infrastructures. The product range has been produced from working closely with our industry partners, combining innovative development and over 40 years of design expertise.

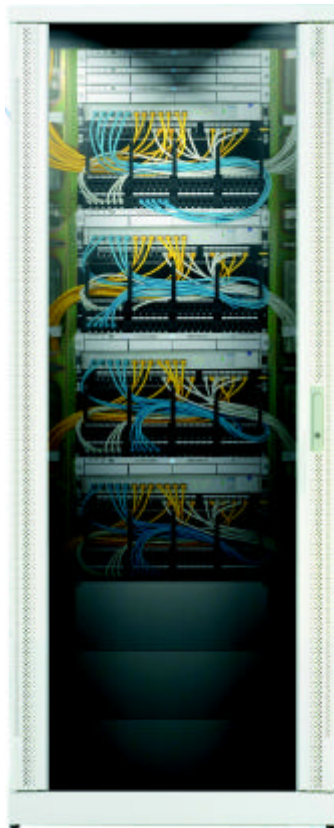
Fusion offers users a truly multi-purpose enclosure with outstanding features and customer benefits, built to the highest quality standards customers have grown to expect from Cooper B-Line.

Suitable for the following applications:

- Cabling, Communications
- Control & Instrumentation
- Servers / Networking

Summary of features and benefits:

- Excellent aesthetics
- 19" rails can be mounted within the front frame providing a neat, tidy finish without doors.
- Integral floor plinth with large apertures for unrestricted cable entry
- Front, side and rear plinth cable apertures providing all round cable entry on solid floors
- Wide vertical cable channels on 800 wide series
- 3 door styles available - vented glass, vented steel or plain steel
- Strong, welded front and rear frame for maximum rigidity
- Lockable quick-remove side panels preventing unauthorised internal access when used without doors
- 2 point lock mechanism on front and rear doors
- Available fully assembled or flat packed

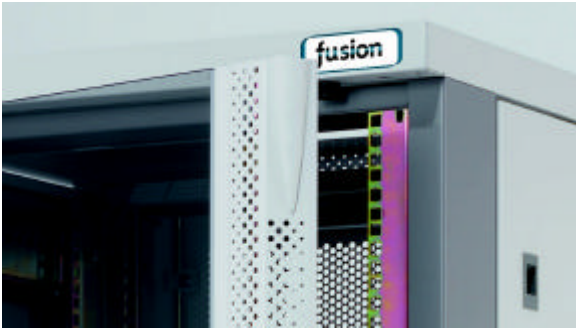


Standard Product:

Fusion is available in the following standard sizes:

Heights – 27, 42 & 47U
Widths – 600 & 800mm
Deaths – 600 & 800mm

The definitive multi-purpose 19" enclosure

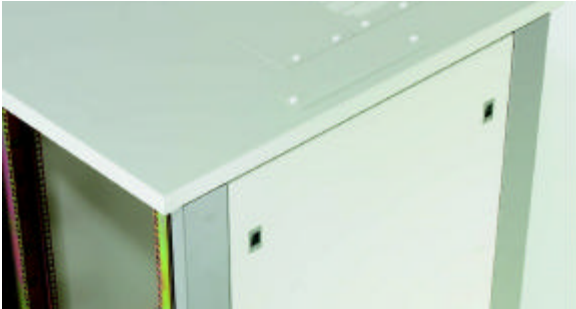


Doors and Side Panels

Fusion Doors are available in the following styles:

- Vented glass
- Solid or vented steel
- Acrylic
- Double (wardrobe style) steel or glass.

Doors can be specified as either left or right hand hinged (except double doors). Doors are made from 1.5mm mild steel. Glass used is 4mm thick toughened tinted grey and Acrylic is 3mm thick.



Side panels can be supplied as either plain or vented* and are made from 1.2mm mild steel

(* made to order item)

Top Panel options:

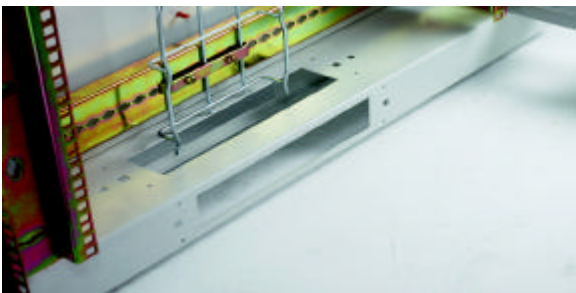


Fusion has a very flexible top panel arrangement that allows any combination of plain, vented, brush strip or fan tray to be fitted in the top frame opening.

The 800W version also has 2 additional cable entry apertures alongside the top panel area.

The following top panel options are available:

- Plain
- Vented
- Brush Strip
- Fan Tray 2 Fans 230V AC
- Fan Tray with TCM1000 (Thermal Control Module) + 2 DC Fans
- Fan Tray 3 Fans 230V AC
- Fan Tray One Piece 4 Fans (230VAC)



Base options:

Fusion has a built-in plinth system that maintains the large base apertures and provides various cable entry points for easy installation. It also comes with jacking feet as standard.

If a cabinet is to house heavy equipment mounted on slide rails, a stabilising plinth can be easily added to the standard plinth to give cabinet stability when the slide mounted equipment is extended.

