

UCoustic™

7250 700w soundproof wall box

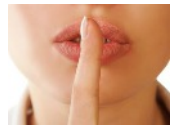


Superior sound attenuation wall boxes

With cooling ability up to 1.5kW

Product overview and technical data





Overview

7250-SP 700 wide **sound proof** wall box

As many office based servers, active equipment and their related cooling apparatus become more powerful to sustain the demands we make from them, they are inevitably becoming noisier in the process. These background noises can lead to an impractical office working environment and they also run the risk of being in breach of EEC guidelines if too loud. The UCoustic 7250-SP and 7210-SP sound proof ranges continue the tradition of quality, style and innovation associated with the USystems repertoire of intelligently designed products.

- Rigid bolted construction
- 700mm width enables superior cabling
- Up to 15dB noise attenuation
- Up to 1.5kW of heat dissipation
- Additional top & bottom plenum chambers for greater noise reduction
- Multi cable access through the lid and base with soundproof cable entry
- Front and rear mounting angles
- Lockable easy access side panels
- One key fits all locks
- 250kg weight loading (distributed evenly)
- Quick release cladding with high quality soundproof foam
- Left or right hand hinged front door
- Versatile

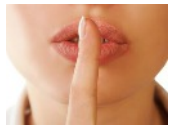
Available in 12U, 18U and 21U heights, 600 deep and 700 wide, the 7250-SP soundproof wall box is ideal for installations which don't require the same level of enhanced noise reduction and cooling as the UCoustic 9210 cabinet.

UP TO 15db NOISE ATTENUATION

UP TO 1.5kW OF COOLING with additional fans



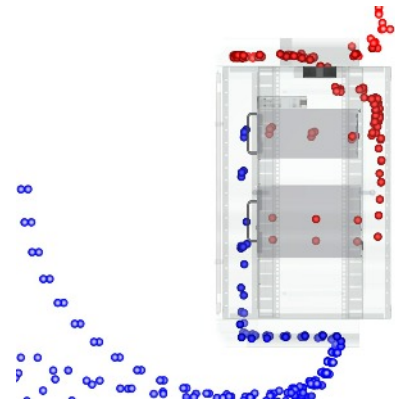
UCoustic 7250-SP sound proof wall box



Standard specification

7250-SP 700w sound proof wall box

Comprising of 4 corner posts, lid and base inclusive of front and rear mounting angles, assembled with Tough Torque™ fixings, lockable front solid steel door, lockable side access panels, vented and cable entry top and bottom cover, assembled fully configured, finished in Black RAL 9005



Airflow path on a 7250-SP including baffles

Available in 1 width, 1 depth and 3 heights

Usable height	12U	18U	21U
External height	630mm	897mm	1125mm
700 wide	✓	✓	✓
600 deep	✓	✓	✓
Actual depth	600mm	600mm	600mm
Maximum usable depth	480mm	480mm	480mm



21U 7250-SP soundproof wall box

Materials and finish

Basic framework - 1.5mm CR4 steel
 Corner posts - 1.2mm & 1.5mm CR4 steel
 Steel doors - 1.2mm CR4 steel
 Side panels - 1.0mm & 1.2mm CR4 steel
 FT80 soundproof foam
 FT-60 solvent free adhesive scrim backing

Textured powder coat Black RAL 9005

(Other colour options are available on request)



Hanging bracket and soundproof foam (for use on uneven walls)

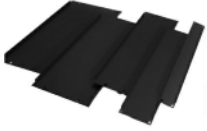


7250 Accessories overview

Thermal management



Quick fit and sound proof blanking panels



Blanking panels play an important role in airflow management. A major benefit is the prevention of hot air re-circulation which eliminates the risk of hot spots.

Top cover fan tray



7250 700w top cover fan tray available in 2 and 3 way options without any loss of U space. Available in low noise or high speed versions to assist in the removal of heat.

Rack Mount Fan



1U high 3 or 6 way 19" rack mount fan trays assist in the removal of heat

Thermostatic Controller



For use with standard or rack mount fan trays

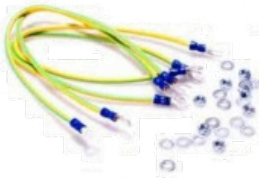
Earthing



Cable management

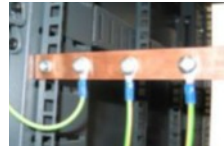


Earth Bonding Kit



Standard cladding door earth bonding kit

Copper Bus Bar



Horizontal and vertical 3mm or 5mm thick solid copper options

ESD Kits



Comprising earthing strap, coiled cable and an earthing plug

Jumper Ring Panels



Ensure best cabling practice by utilising 19" jumper ring panels, available in 1U and 2U heights.

Shelving

Cantilever shelf



Easy to fit shelving solution suitable for mounting non 19" equipment. Mount directly to the 19" mounting angles with cage nut fixings (included).

Fixed Shelf



Standard or heavy duty fixed shelves with a maximum load bearing of 50kg and 100kg respectively - evenly distributed.

Chassis runners



Simple and cost effective alternative to cantilever and fixed shelving. Easy to fit and allows you to support and withdraw full width products with safety.

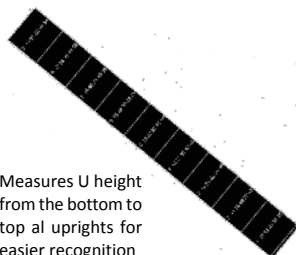
Miscellaneous

Document Wallet



Providing a neat solution for storage of paperwork or manuals. Can be fitted inside or outside door or side panels

U Measure Strips



Measures U height from the bottom to top al uprights for easier recognition

Cage Nut Fixings



Cage nuts, bolts and washers for rack mounting equipment in cabinets

Dust filter



Easy to apply washable foam filter, prevents dust from entering a 9210 or 7250 UCoustic cabinet helping to protect any sensitive hardware housed inside.

Also available 7210-SP midi data-comms



and server soundproof cabinets

The USpace 7210-SP 600w x 1000d midi cabinet is available in two heights 12U and 18U and is suitable as both a data-comms and server cabinet which are compatible with all major server brands.



- ❑ Houses all major server brands
- ❑ Open structure design
- ❑ Superior cable management
- ❑ Up to 1.5kW of cooling
- ❑ Multi server practice
- ❑ Multi depth mounting
- ❑ Integral bottom cable entry
- ❑ Front and rear mounting angles
- ❑ One key fits all locks
- ❑ 250kg weight loading
- ❑ Quick release cladding
- ❑ Left or right hand hinged front door
- ❑ Value added styling
- ❑ Lockable easy access side panels
- ❑ Castors
- ❑ Full range of accessories



UP TO 15db NOISE ATTENUATION

UP TO 1.5kW OF COOLING

250kg WEIGHT LOADING

UCoustic
19" soundproof cabinets



High performance soundproof cabinets
keeping IT quiet and cool

Product overview and technical data

ColdLogik
CL20 Rear Cooler range



Unrivalled data centre cooling
Perfect climate - perfect control

Product overview and technical data - metric


UTelligent
Secure Space range



Access, security and environmental system
Intelligent locking and monitoring solutions

Product overview and technical data

UTelligent
Intelligent power range



Power, security and monitoring solutions
Featuring cost effective iPower technology

Product overview and technical data

ColdLogik
"CAP" Controlled Air Path



Passive and active Controlled Air Path
incorporating UTelligent technology

Product overview and technical data

ColdLogik
"DAX" Directional Airflow eXhaust system



Energy efficient heat removal and redistribution
incorporating UTelligent technology

Product overview and technical data


ColdLogik
Aisle air containment solutions



Hot, cold, horizontal, vertical or convex aisle systems
Perfect climate - perfect control

Product overview and technical data

USpace
7210 19" midi cabinet range



Data-comms and server cabinets
Including the 7210 midi soundproof cabinet

Product overview and technical data

USpace
4210 19" cabinet range



Multi function cabinets and accessories
Stylish, practical and versatile

Product overview and technical data